

2/12

Love
myself.

Side 1

every one can
leave "the cave"

↳ Ignorance
"Lack of Knowledge"

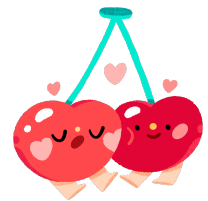
Side 2

Not everyone
can leave "the Cave"

Action	Info
Intro	Someone who was raised in a cult
explain	<ul style="list-style-type: none">- Loss of family- Blind to other Info- fear of Consequences
background	<ul style="list-style-type: none">- Rituals- Abuse / trauma- Brain wash
Analyze	<ul style="list-style-type: none">- exposure is limited- geography (woods - bunkers)- Dependency
Reflect	Please Wait.

"Not everyone
can leave"

love





2/14 

Life's purpose




empathy & Compassion

Practical Self-Protective

- Smallest Population 
- ||
- family 
 - Support (always)
 - Safe environment
 - willingly given/shown love

Leaving

- Largest Population 
- |||| |
- People pleasing
↳ worth ~~x~~ what we can do for others
 - Inconsistent Support/love
 - no consistency

In the Cave

Born In  love 
{ Inner Peace! } 

Born In Survival 



rewire

